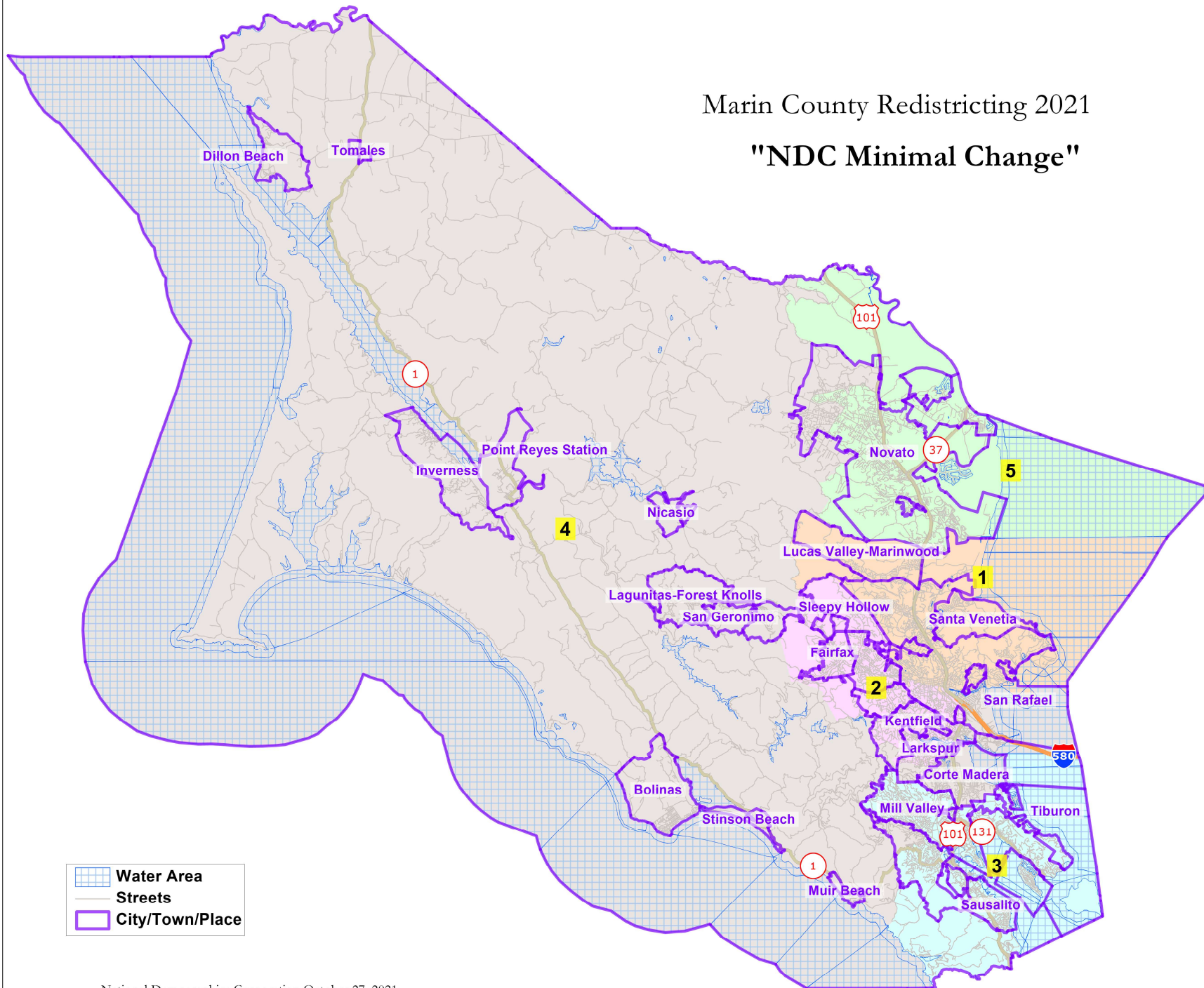


# Marin County Redistricting 2021

## "NDC Minimal Change"



County of Marin - "NDC Minimal Change"							
District		1	2	3	4	5	Total
2020	2020 Census (Adjusted)	52,849	53,289	52,300	50,669	49,446	258,553
	Deviation from ideal	1,138	1,578	589	-1,042	-2,265	3,843
	% Deviation	2.20%	3.05%	1.14%	-2.01%	-4.38%	7.43%
2020 Total Pop	% Hisp	19%	13%	7%	30%	26%	19%
	% NH White	65%	75%	76%	59%	57%	67%
	% NH Black	2%	1%	1%	1%	1%	2%
	% Asian-American	1%	7%	10%	78%	80%	1%
Citizen Voting Age Pop	Total	37,566	37,753	38,705	31,825	36,983	182,831
	% Hisp	8%	6%	5%	10%	11%	8%
	% NH White	80%	87%	84%	82%	74%	81%
	% NH Black	2%	2%	3%	1%	4%	3%
	% Asian/Pac.Isl.	8%	5%	6%	6%	9%	7%
Voter Registration (Nov 2020)	Total	35,579	38,983	39,167	30,572	31,478	175,779
	% Latino est.	7%	5%	4%	8%	11%	7%
	% Spanish-Surnamed	7%	5%	4%	8%	10%	6%
	% Asian-Surnamed	4%	3%	4%	4%	4%	4%
	% Filipino-Surnamed	1%	1%	1%	1%	1%	1%
	% NH White est.	86%	90%	88%	86%	81%	86%
	% NH Black	2%	2%	3%	1%	3%	2%
Voter Turnout (Nov 2018)	Total	26,406	29,711	28,766	22,412	22,243	129,538
	% Latino est.	5%	4%	3%	6%	8%	1%
	% Spanish-Surnamed	2%	2%	2%	1%	3%	2%
	% Asian-Surnamed	3%	2%	3%	3%	4%	3%
	% Filipino-Surnamed	5%	4%	3%	6%	8%	5%
	% NH White est.	1%	0%	0%	1%	1%	89%
	% NH Black	88%	91%	90%	88%	84%	89%
Voter Turnout (Nov 2020)	Total	31,656	35,217	34,958	27,276	27,694	156,801
	% Latino est.	7%	5%	3%	7%	10%	1%
	% Spanish-Surnamed	6%	4%	3%	7%	9%	6%
	% Asian-Surnamed	4%	3%	4%	4%	4%	4%
	% Filipino-Surnamed	1%	0%	1%	1%	1%	1%
	% NH White est.	87%	90%	88%	87%	82%	6%
	% NH Black est.	2%	2%	3%	1%	3%	87%
ACS Pop. Est.	Total	51,229	51,508	52,320	50,248	51,990	257,294
Age	age0-19	21%	23%	22%	25%	21%	22%
	age20-60	48%	48%	46%	48%	50%	48%
	age60plus	31%	29%	32%	27%	28%	29%
Immigration	immigrants	19%	13%	16%	22%	21%	18%
	naturalized	54%	51%	60%	32%	50%	49%
Language spoken at home	english	75%	82%	82%	66%	68%	75%
	spanish	9%	6%	4%	21%	16%	11%
	asian-lang	4%	2%	3%	2%	5%	3%
	other lang	8%	5%	8%	5%	6%	6%
Language Fluency	Speaks Eng. "Less than Very Well"	8%	4%	4%	15%	11%	8%
Education (among those age 25+)	hs-grad	28%	21%	20%	30%	38%	27%
	bachelor	35%	40%	39%	29%	30%	35%
	graduatedegree	25%	29%	34%	22%	16%	25%
Child in Household	child-under18	25%	29%	29%	31%	27%	28%
Pct of Pop. Age 16+	employed	63%	67%	62%	66%	65%	65%
Household Income	income 0-25k	11%	10%	9%	11%	12%	11%
	income 25-50k	12%	12%	10%	15%	14%	12%
	income 50-75k	12%	11%	9%	12%	13%	11%
	income 75-200k	39%	37%	34%	38%	41%	38%
	income 200k-plus	25%	30%	38%	24%	20%	28%
Housing Stats	single family	69%	71%	69%	78%	74%	72%
	multi-family	31%	29%	31%	22%	26%	28%
	rented	35%	35%	34%	33%	33%	34%
	owned	61%	59%	59%	54%	63%	59%
Total population data from the California adjustment to the 2020 Decennial Census. Surname-based Voter Registration and Turnout data from the California Statewide Database. Latino voter registration and turnout data are Spanish-surname counts adjusted using Census Population Department undercount estimates. NH White and NH Black registration and turnout counts estimated by NDC. Citizen Voting Age Pop., Age, Immigration, and other demographics from the 2015-2019 American Community Survey and Special Tabulation 5-year data.							