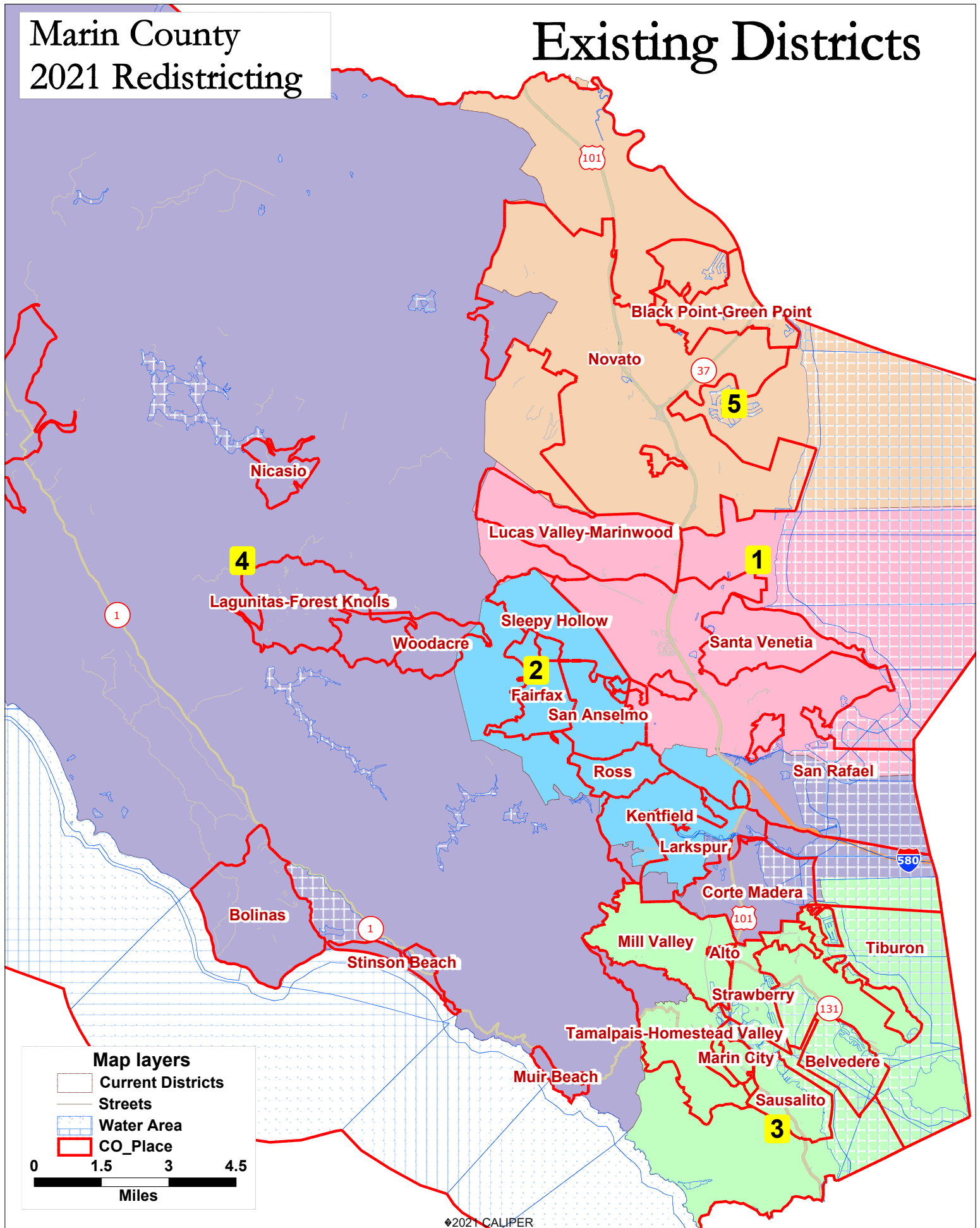


# Marin County 2021 Redistricting

# Existing Districts

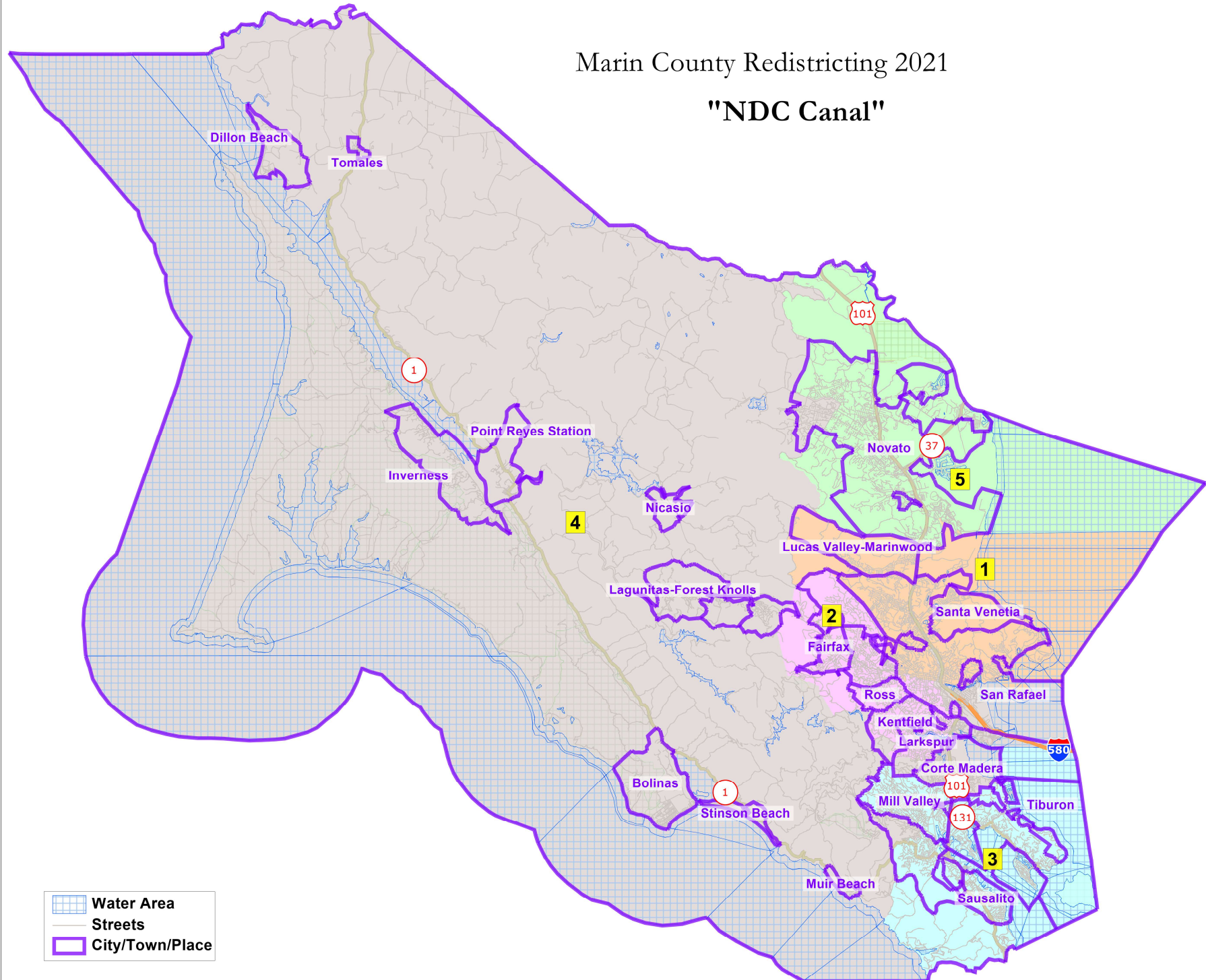


# Attachment 2: Map A (Existing Districts)

Marin County Current Official Demographics							
District		1	2	3	4	5	Total
	Total Pop	53,001	53,029	52,300	48,283	51,940	258,553
	Deviation from ideal	1,290	1,318	589	-3,428	229	4,746
	% Deviation	2.49%	2.55%	1.14%	-6.63%	0.44%	9.18%
Total Pop	% Hisp	18.6%	13%	7%	31%	26%	19%
	% NH White	65%	75%	76%	58%	58%	67%
	% NH Black	2%	2%	3%	2%	3%	2%
	% Asian-American	10%	7%	10%	7%	9%	9%
Citizen Voting Age Pop	Total	37,707	37,536	38,705	29,775	39,108	162,831
	% Hisp	8%	6%	5%	11%	11%	8%
	% NH White	80%	87%	84%	81%	75%	81%
	% NH Black	2%	2%	3%	1%	4%	3%
	% Asian/Pac.Isl.	8%	5%	6%	6%	9%	7%
Voter Registration (Nov 2020)	Total	35,592	38,768	39,167	28,619	33,633	175,779
	% Latino est.	7%	5%	4%	8%	10%	7%
	% Spanish-Surnamed	7%	5%	4%	8%	9%	6%
	% Asian-Surnamed	4%	3%	4%	4%	4%	4%
	% Filipino-Surnamed	1%	1%	1%	1%	1%	1%
	% NH White est.	86%	90%	88%	85%	82%	86%
	% NH Black	2%	2%	3%	1%	3%	2%
Voter Turnout (Nov 2020)	Total	31,669	35,017	34,958	25,487	29,670	156,801
	% Latino est.	7%	5%	3%	8%	9%	6%
	% Spanish-Surnamed	6%	4%	3%	7%	9%	6%
	% Asian-Surnamed	4%	3%	4%	4%	4%	4%
	% Filipino-Surnamed	1%	1%	1%	1%	1%	1%
	% NH White est.	87%	90%	88%	86%	82%	87%
	% NH Black	2%	2%	3%	1%	3%	2%
Voter Turnout (Nov 2018)	Total	26,415	29,541	28,766	20,923	23,893	129,538
	% Latino est.	6%	4%	3%	6%	8%	5%
	% Spanish-Surnamed	5%	4%	3%	6%	7%	5%
	% Asian-Surnamed	3%	2%	3%	3%	3%	3%
	% Filipino-Surnamed	1%	0%	0%	1%	1%	1%
	% NH White est.	88%	91%	90%	88%	85%	89%
	% NH Black est.	2%	2%	2%	1%	3%	2%
ACS Pop. Est.	Total	51,368	51,232	52,313	47,640	54,741	257,294
Age	age0-19	21%	23%	22%	25%	21%	22%
	age20-60	48%	48%	46%	48%	50%	48%
	age60plus	31%	29%	32%	27%	29%	29%
Immigration	immigrants	19%	13%	16%	23%	20%	18%
	naturalized	54%	51%	60%	31%	50%	49%
Language spoken at home	english	78%	86%	85%	69%	72%	78%
	spanish	10%	6%	4%	23%	16%	12%
	asian-lang	4%	2%	3%	3%	5%	3%
	other lang	8%	5%	8%	5%	7%	7%
Language Fluency	Speaks Eng. "Less than Very Well"	9%	4%	4%	17%	11%	9%
Education (among those age 25+)	hs-grad	28%	21%	20%	30%	38%	27%
	bachelor	35%	40%	39%	29%	30%	35%
	graduatedegree	25%	29%	34%	23%	17%	25%
Child in Household	child-under18	25%	29%	29%	31%	27%	28%
Pct of Pop. Age 16+	employed	63%	67%	62%	66%	65%	65%
Household Income	income 0-25k	11%	10%	9%	11%	11%	11%
	income 25-50k	12%	12%	10%	15%	13%	12%
	income 50-75k	12%	11%	9%	12%	14%	11%
	income 75-200k	39%	37%	34%	38%	41%	38%
	income 200k-plus	25%	30%	38%	24%	21%	28%
Housing Stats	single family	69%	72%	69%	77%	75%	72%
	multi-family	31%	28%	31%	23%	25%	28%
	rented	36%	37%	37%	39%	33%	36%
	owned	64%	63%	63%	61%	67%	64%
Total population data from the 2010 Decennial Census.							
Surname-based Voter Registration and Turnout data from the California Statewide Database.							
Latino voter registration and turnout data are Spanish-surname counts adjusted using Census Population Department undercount estimates. NH White and NH Black registration and turnout counts estimated by NDC. Citizen Voting Age Pop., Age, Immigration, and other demographics from the 2013-2017 American Community Survey and Special Tabulation 5-year data.							

# Marin County Redistricting 2021

## "NDC Canal"



## Attachment 2: Map B (Canal COI)

Marin County - NDC Canal - 2020 Census Adjusted							
District		1	2	3	4	5	Total
2020	2020 Census (Adjusted)	50,930	51,303	52,300	52,080	51,940	258,553
	Deviation from ideal	-781	-408	589	369	229	1,370
	% Deviation	-1.51%	-0.79%	1.14%	0.71%	0.44%	2.65%
2020 Total Pop	% Hisp	17%	12%	7%	32%	26%	19%
	% NH White	67%	76%	76%	56%	58%	67%
	% NH Black	2%	2%	3%	2%	3%	2%
	% Asian-American	10%	7%	10%	7%	9%	9%
Citizen Voting Age Pop	Total	36,573	36,584	38,705	31,861	39,108	182,831
	% Hisp	8%	5%	5%	12%	11%	8%
	% NH White	81%	87%	84%	79%	75%	81%
	% NH Black	2%	2%	3%	2%	4%	3%
	% Asian/Pac.Isl.	8%	5%	6%	6%	9%	7%
Voter Registration (Nov 2020)	Total	34,817	37,954	39,167	30,208	33,633	175,779
	% Latino est.	7%	5%	4%	9%	10%	7%
	% Spanish-Surnamed	6%	5%	4%	8%	9%	6%
	% Asian-Surnamed	4%	3%	4%	4%	4%	4%
	% Filipino-Surnamed	1%	1%	1%	1%	1%	1%
	% NH White est.	86%	90%	88%	85%	82%	86%
	% NH Black	2%	2%	3%	1%	3%	2%
Voter Turnout (Nov 2018)	Total	25,986	28,947	28,766	21,946	23,893	129,538
	% Latino est.	88%	91%	90%	88%	85%	89%
	% Spanish-Surnamed	5%	4%	3%	6%	8%	5%
	% Asian-Surnamed	3%	2%	3%	3%	3%	3%
	% Filipino-Surnamed	1%	0%	0%	1%	1%	1%
	% NH White est.	1%	2%	2%	1%	3%	2%
	% NH Black	5%	4%	3%	6%	7%	5%
Voter Turnout (Nov 2020)	Total	31,057	34,296	34,958	26,820	29,670	156,801
	% Latino est.	6%	4%	3%	8%	9%	6%
	% Spanish-Surnamed	6%	4%	3%	7%	9%	6%
	% Asian-Surnamed	4%	3%	4%	4%	4%	4%
	% Filipino-Surnamed	1%	1%	1%	1%	1%	1%
	% NH White est.	87%	90%	88%	86%	82%	87%
	% NH Black est.	2%	2%	3%	1%	3%	2%
ACS Pop. Est.	Total	49,620	49,207	52,313	51,412	54,741	257,294
Age	age0-19	21%	22%	22%	25%	21%	22%
	age20-60	48%	48%	46%	49%	50%	48%
	age60plus	31%	29%	32%	26%	29%	29%
Immigration	immigrants	19%	13%	16%	23%	20%	18%
	naturalized	54%	52%	60%	32%	50%	49%
Language spoken at home	english	78%	87%	85%	69%	72%	78%
	spanish	9%	5%	4%	24%	16%	12%
	asian-lang	4%	2%	3%	3%	5%	3%
	other lang	8%	6%	8%	5%	7%	7%
Language Fluency	Speaks Eng. "Less than Very Well"	8%	4%	4%	17%	11%	9%
Education (among those age 25+)	hs-grad	28%	20%	20%	30%	38%	27%
	bachelor	35%	41%	39%	29%	30%	35%
	graduatedegree	25%	29%	34%	22%	17%	25%
Child in Household	child-under18	26%	29%	29%	31%	27%	28%
Pct of Pop. Age 16+	employed	62%	67%	62%	66%	65%	65%
Household Income	income 0-25k	11%	10%	9%	11%	11%	11%
	income 25-50k	12%	12%	10%	15%	13%	12%
	income 50-75k	12%	11%	9%	12%	14%	11%
	income 75-200k	39%	37%	34%	37%	41%	38%
	income 200k-plus	26%	30%	38%	24%	21%	28%
Housing Stats	single family	70%	71%	69%	76%	75%	72%
	multi-family	30%	29%	31%	24%	25%	28%
	rented	35%	37%	37%	40%	33%	36%
	owned	65%	63%	63%	60%	67%	64%
Total population data from the California adjustment to the 2020 Decennial Census. Surname-based Voter Registration and Turnout data from the California Statewide Database. Latino voter registration and turnout data are Spanish-surname counts adjusted using Census Population Department undercount estimates. NH White and NH Black registration and turnout counts estimated by NDC. Citizen Voting Age Pop., Age, Immigration, and other demographics from the 2015-2019 American Community Survey and Special Tabulation 5-year data.							

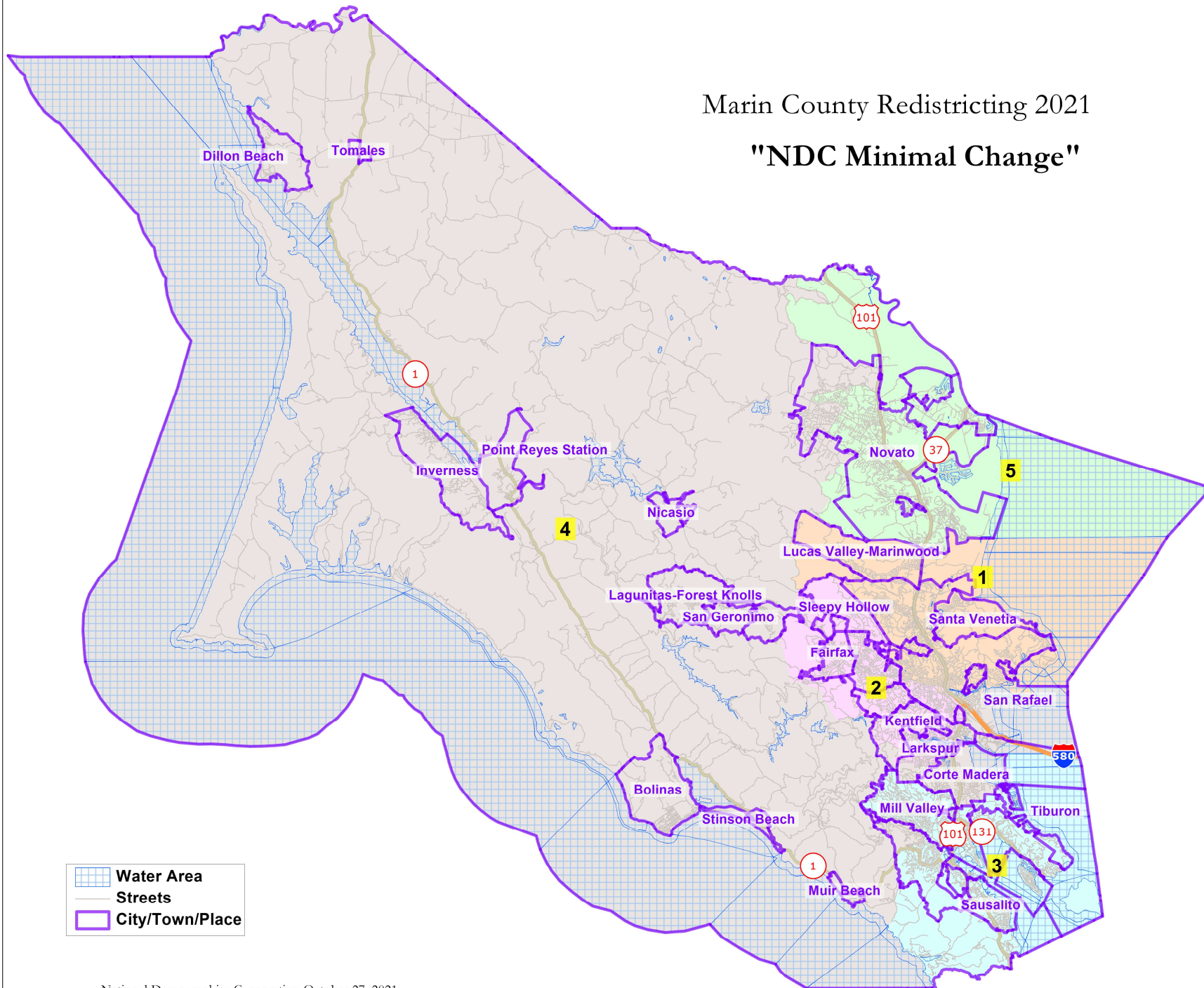


1



## Marin County Redistricting 2021

### "NDC Minimal Change"



## Attachment 2: Map C (Minimal Change)

County of Marin - "NDC Minimal Change"							
District		1	2	3	4	5	Total
2020	2020 Census (Adjusted)	52,849	53,289	52,300	50,669	49,446	258,553
	Deviation from ideal	1,138	1,578	589	-1,042	-2,265	3,843
	% Deviation	2.20%	3.05%	1.14%	-2.01%	-4.38%	7.43%
2020 Total Pop	% Hisp	19%	13%	7%	30%	26%	19%
	% NH White	65%	75%	76%	59%	57%	67%
	% NH Black	2%	1%	1%	1%	1%	2%
	% Asian-American	1%	7%	10%	78%	80%	1%
Citizen Voting Age Pop	Total	37,566	37,753	38,705	31,825	36,983	182,831
	% Hisp	8%	6%	5%	10%	11%	8%
	% NH White	80%	87%	84%	82%	74%	81%
	% NH Black	2%	2%	3%	1%	4%	3%
	% Asian/Pac.Isl.	8%	5%	6%	6%	9%	7%
Voter Registration (Nov 2020)	Total	35,579	38,983	39,167	30,572	31,478	175,779
	% Latino est.	7%	5%	4%	8%	11%	7%
	% Spanish-Surnamed	7%	5%	4%	8%	10%	6%
	% Asian-Surnamed	4%	3%	4%	4%	4%	4%
	% Filipino-Surnamed	1%	1%	1%	1%	1%	1%
	% NH White est.	86%	90%	88%	86%	81%	86%
Voter Turnout (Nov 2018)	% NH Black	2%	2%	3%	1%	3%	2%
	Total	26,406	29,711	28,766	22,412	22,243	129,538
	% Latino est.	5%	4%	3%	6%	8%	1%
	% Spanish-Surnamed	2%	2%	2%	1%	3%	2%
	% Asian-Surnamed	3%	2%	3%	3%	4%	3%
	% Filipino-Surnamed	5%	4%	3%	6%	8%	5%
	% NH White est.	1%	0%	0%	1%	1%	89%
Voter Turnout (Nov 2020)	% NH Black	88%	91%	90%	88%	84%	89%
	Total	31,656	35,217	34,958	27,276	27,694	156,801
	% Latino est.	7%	5%	3%	7%	10%	1%
	% Spanish-Surnamed	6%	4%	3%	7%	9%	6%
	% Asian-Surnamed	4%	3%	4%	4%	4%	4%
	% Filipino-Surnamed	1%	0%	1%	1%	1%	1%
	% NH White est.	87%	90%	88%	87%	82%	6%
ACS Pop. Est.	% NH Black est.	2%	2%	3%	1%	3%	87%
	Total	51,229	51,508	52,320	50,248	51,990	257,294
	age0-19	21%	23%	22%	25%	21%	22%
	age20-60	48%	48%	46%	48%	50%	48%
	age60plus	31%	29%	32%	27%	28%	29%
	immigrants	19%	13%	16%	22%	21%	18%
	naturalized	54%	51%	60%	32%	50%	49%
Language spoken at home	english	75%	82%	82%	66%	68%	75%
	spanish	9%	6%	4%	21%	16%	11%
	asian-lang	4%	2%	3%	2%	5%	3%
	other lang	8%	5%	8%	5%	6%	6%
Language Fluency	Speaks Eng. "Less than Very Well"	8%	4%	4%	15%	11%	8%
Education (among those age 25+)	hs-grad	28%	21%	20%	30%	38%	27%
	bachelor	35%	40%	39%	29%	30%	35%
	graduatedegree	25%	29%	34%	22%	16%	25%
Child in Household	child-under18	25%	29%	29%	31%	27%	28%
Pct of Pop. Age 16+	employed	63%	67%	62%	66%	65%	65%
Household Income	income 0-25k	11%	10%	9%	11%	12%	11%
	income 25-50k	12%	12%	10%	15%	14%	12%
	income 50-75k	12%	11%	9%	12%	13%	11%
	income 75-200k	39%	37%	34%	38%	41%	38%
	income 200k-plus	25%	30%	38%	24%	20%	28%
Housing Stats	single family	69%	71%	69%	78%	74%	72%
	multi-family	31%	29%	31%	22%	26%	28%
	rented	35%	35%	34%	33%	33%	34%
	owned	61%	59%	59%	54%	63%	59%
Total population data from the California adjustment to the 2020 Decennial Census. Surname-based Voter Registration and Turnout data from the California Statewide Database. Latino voter registration and turnout data are Spanish-surname counts adjusted using Census Population Department undercount estimates. NH White and NH Black registration and turnout counts estimated by NDC. Citizen Voting Age Pop., Age, Immigration, and other demographics from the 2015-2019 American Community Survey and Special Tabulation 5-year data.							



Attachment 2: Map C (Minimal Change)

