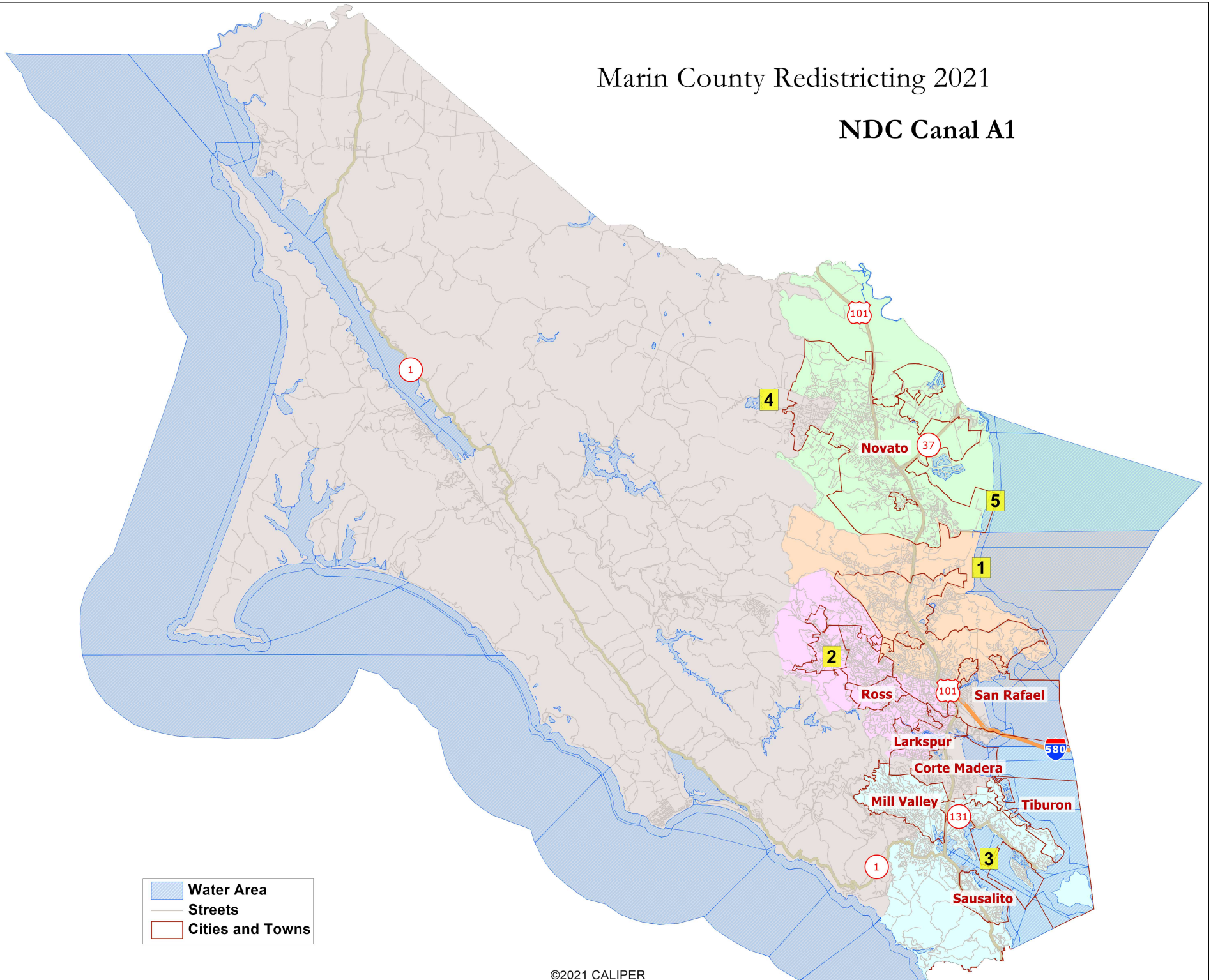
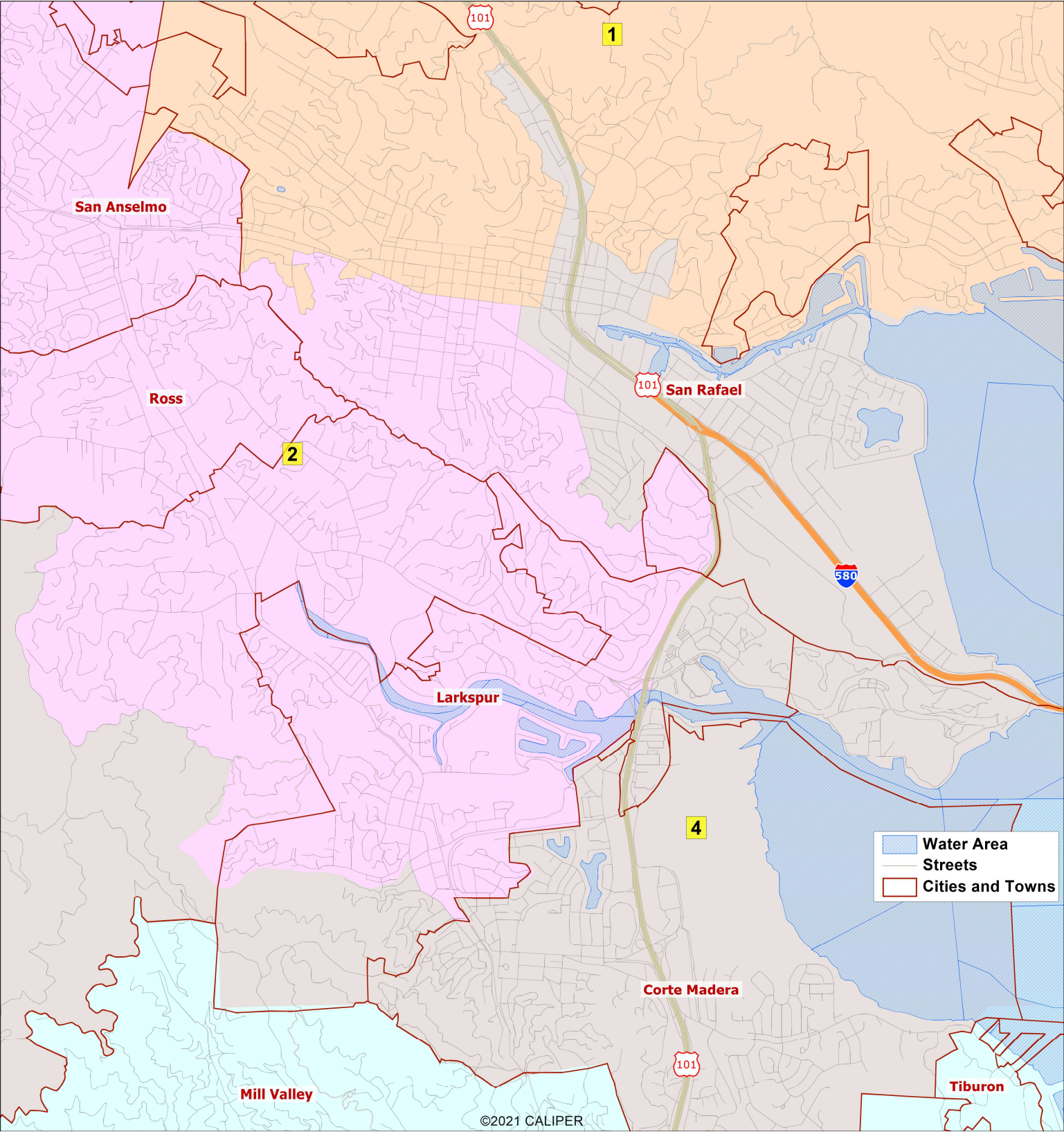


Marin County Redistricting 2021

NDC Canal A1





Marin County - NDC Canal A1 - 2020 Census Adjusted							
District		1	2	3	4	5	Total
2020	2020 Census (Adjusted)	49,187	51,303	52,300	53,823	51,940	258,553
	Deviation from ideal	-2,524	-408	589	2,112	229	4,636
	% Deviation	-4.88%	-0.79%	1.14%	4.09%	0.44%	8.97%
2020 Total Pop	% Hisp	16%	12%	7%	32%	26%	19%
	% NH White	67%	76%	76%	56%	58%	67%
	% NH Black	2%	2%	3%	2%	3%	2%
	% Asian-American	10%	7%	10%	7%	9%	9%
Citizen Voting Age Pop	Total	35,670	36,584	38,705	32,764	39,108	182,831
	% Hisp	7%	5%	5%	12%	11%	8%
	% NH White	81%	87%	84%	79%	75%	81%
	% NH Black	2%	2%	3%	2%	4%	3%
	% Asian/Pac.Isl.	8%	5%	6%	6%	9%	7%
Voter Registration (Nov 2020)	Total	33,931	37,954	39,167	31,094	33,633	175,779
	% Latino est.	7%	5%	4%	9%	10%	7%
	% Spanish-Surnamed	6%	5%	4%	8%	9%	6%
	% Asian-Surnamed	4%	3%	4%	4%	4%	4%
	% Filipino-Surnamed	1%	1%	1%	1%	1%	1%
	% NH White est.	87%	90%	88%	85%	82%	86%
	% NH Black	2%	2%	3%	1%	3%	2%
Voter Turnout (Nov 2018)	Total	25,443	28,947	28,766	22,489	23,893	129,538
	% Latino est.	5%	4%	3%	6%	8%	5%
	% Spanish-Surnamed	5%	4%	3%	6%	7%	5%
	% Asian-Surnamed	3%	2%	3%	3%	3%	3%
	% Filipino-Surnamed	1%	0%	0%	1%	1%	1%
	% NH White est.	89%	91%	90%	88%	85%	89%
	% NH Black	1%	2%	2%	1%	3%	2%
Voter Turnout (Nov 2020)	Total	30,337	34,296	34,958	27,540	29,670	156,801
	% Latino est.	6%	4%	3%	8%	9%	6%
	% Spanish-Surnamed	6%	4%	3%	8%	9%	6%
	% Asian-Surnamed	4%	3%	4%	4%	4%	4%
	% Filipino-Surnamed	1%	1%	1%	1%	1%	1%
	% NH White est.	87%	90%	88%	86%	82%	87%
	% NH Black est.	2%	2%	3%	1%	3%	2%
ACS Pop. Est.	Total	48,186	49,207	52,313	52,847	54,741	257,294
Age	age0-19	21%	22%	22%	25%	21%	22%
	age20-60	47%	48%	46%	49%	50%	48%
	age60plus	31%	29%	32%	26%	29%	29%
Immigration	immigrants	19%	13%	16%	23%	20%	18%
	naturalized	54%	52%	60%	33%	50%	49%
Language spoken at home	english	79%	87%	85%	69%	72%	78%
	spanish	9%	5%	4%	24%	16%	12%
	asian-lang	4%	2%	3%	3%	5%	3%
	other lang	9%	6%	8%	5%	7%	7%
Language Fluency	Speaks Eng. "Less than Very Well"	8%	4%	4%	17%	11%	9%
Education (among those age 25+)	hs-grad	28%	20%	20%	30%	38%	27%
	bachelor	36%	41%	39%	28%	30%	35%
	graduatedegree	25%	29%	34%	22%	17%	25%
Child in Household	child-under18	26%	29%	29%	31%	27%	28%
Pct of Pop. Age 16+	employed	62%	67%	62%	66%	65%	65%
Household Income	income 0-25k	11%	10%	9%	12%	11%	11%
	income 25-50k	12%	12%	10%	16%	13%	12%
	income 50-75k	12%	11%	9%	12%	14%	11%
	income 75-200k	40%	37%	34%	37%	41%	38%
	income 200k-plus	26%	30%	38%	24%	21%	28%
Housing Stats	single family	71%	71%	69%	74%	75%	72%
	multi-family	29%	29%	31%	26%	25%	28%
	rented	34%	37%	37%	42%	33%	36%
	owned	66%	63%	63%	58%	67%	64%
Total population data from the California adjustment to the 2020 Decennial Census. Surname-based Voter Registration and Turnout data from the California Statewide Database. Latino voter registration and turnout data are Spanish-surname counts adjusted using Census Population Department undercount estimates. NH White and NH Black registration and turnout counts estimated by NDC. Citizen Voting Age Pop., Age, Immigration, and other demographics from the 2015-2019 American Community Survey and Special Tabulation 5-year data.							